



St. Stephen Lutheran Church
7800 Erie Street
Sylvania, OH 43560

Ministers: The People of St Stephen
Summer Interim Pastor: Rev. Peter Martyn
Music Director: Scott Ballard
Spiritual Growth/Children's Ministry: Rod Hochstetler/Libby Boldt
Administrative Assistant: Susan Hendricks
Church e-mail: sslcsecretary@buckeye-express.com
Internet: www.ststephensylvania.org
Phone: 419-885-1551 Fax: 419-885-1573

St. Stephen is an active Christian community seeking to glorify God by serving others. We foster an open and loving environment where people grow closer to Christ and are inspired to share His love with everyone.

SEPTEMBER

Our Guiding Principles & Core Values

(those nonnegotiable for us as a congregation)

† All are welcomed and embraced

† Worship and prayer are the foundations of our ministry

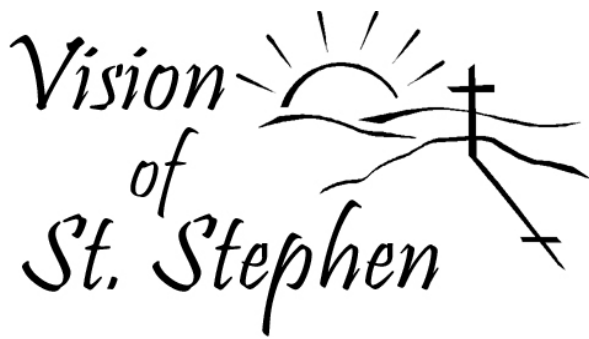
† Using our God given gifts, we serve others

† Christ centered activities ensure spiritual growth

† We support each other through the strength of our fellowship

INSIDE

SEPTEMBER EVENTS & ACTIVITIES	pg 2
PASTOR PONDERINGS	pg 3
SPIRITUAL GROWTH	pg 4
Gathering Space / Sunday Lessons / Support Experience / Men of Faith	
ADDITIONAL OPPORTUNITIES	pg 4
Community Health Fair	
YOUTH & FAMILY	pg 5
Covenant of Renewal / Fall Classes Begin / Potluck Lunch	
Confirmation	
WOMEN:	pg 5
Joy Club, Women's Coffee, Cookies & Conversation	
OUTREACH	pg 6
Lutheran World Relief / Kroger Community Rewards	
Feed Lucas County Children	
LSS Food Pantry / Noisy Offering / Operation Christmas Child	
PRAYER	pg 7
Prayer Notes / Healing Prayers	
FUN	pg 7
Christian Symbols/ Bible Quiz	
STEVE'S BULLETIN BOARD	pg 8-9
Book Club / Thank You's / Musical Notes / ALS Walk	
COUNCIL	pg 10
Little Miracles Montessori	
THRIVENT / SYNOD	pg 10
LSS Centennial Celebration / Hospice 101 / Enrich Your Life	
NEWSLETTER INFORMATION	pg 10
ANSWERS:	pg 10
Bible Quiz	
VOLUNTEERS & CELEBRATIONS	pg 11
CALENDAR	BACK COVER



St. Stephen Lutheran Church

7800 Erie Street, Sylvania, OH 43560

SUMMER INTERIM PASTOR: REV. PETER MARTYN
419-885-1551

Worship: Sundays 8:30AM & 11:00AM

Spiritual Growth 9:45AM

www.ststephensylvania.org // sslcsecretary@buckeye-express.com

Office Hours: Monday—Thursday 8:00 AM—1:00 PM



A Congregation of the Evangelical Lutheran Church in America

SEPTEMBER 2011

LABOR DAY
September 5

MEN of FAITH
September 8, 22
6:30AM (page 4)

SPIRITUAL GROWTH

A September Sunday Morning

SUPPORT EXPERIENCE

at St. Stephen's Lutheran Church

beginning Sunday, September 11, 2011

[the Anniversary of 9/11]

9/11; 9/18/ 9/25 and 10/2

from 9:45AM – 10:45AM

in the Fellowship Hall

(page 4, 5)

September 11, 18, 25

Following the Children's Sermon at

11:00AM service

SUNDAY LESSONS

for PRESCHOOL thru 4TH GRADE

(page 4, 5)

Additional Opportunities

5TH—6TH GRADE

CHATECHISM

HIGH SCHOOL YOUTH

(page 5)



Health & Community

Awareness Fair:

September 10

10AM—3PM

We need people willing to serve as hosts/hostesses to welcome those coming into the building.

(page 4)

PATRIOT'S DAY

September 11

TERROR NO MORE

"O LORD, you will hear the desire of the meek; you will strengthen their heart, you will incline your ear to do justice for the orphan and the oppressed, so that those from earth may strike terror no more" (Psalm 10:17-18, NRSV).

Ten years have passed since that tragic September morning in 2001, when terrorists took thousands of innocent lives and shattered America's sense of security. As we reflect on this anniversary, Psalm 10 reminds us that God is on the side of the victim, the weak and the helpless. He won't ignore the cries of people in need, and he always ensures that justice is ultimately done.

COVENANT OF RENEWAL

September 11, 18 25

during Sunday morning worship services

(page 5)

FIRST DAY OF AUTUMN

September 23

JOY CLUB

September 26.

12:30PM

(page 5)

Pastor Peter's Ponderings



What a thrill to join St. Stephen's in mission and ministry "at my age" as your Interim Pastor. Your warmth and encouragement on my first Sunday (August 7th) was contagious! I hope through my worship leadership that day you have already found me responding to your ENTHUSIASM (of course, that is "normal" for Pastor Peter ... I tend to get hyped-up quite easily). So you can expect the same enthusiasm from me as long as we are together.

What can I say that might be helpful during these short, two months we have together (after Sunday, I jokingly said to my wife, "Golly, Susan, wouldn't it be great to be at St. Stephen's for longer than August and September!"). Now before you say anything, you have to understand that I was only kidding! When Pastor Schutt contacted me, I was even hesitant about "taking" an interim for two months. After 40 years of giving myself with consecration to the church, I am now ready to enjoy the rest of my life without being on "beckon call" for 24/7.

But what can I say that might be helpful for the good of each of you and the whole congregation?

FIRST, don't hesitate to tell me if I can help you with pastoral care. Obviously, my time with you each week is limited, but I still want to be supportive in whatever way may be possible.

SECOND, remain faithful to our Lord and His mission at St. Stephen's during this "interim" time. Nothing is more devastating to a congregation ... or for that matter, to Jesus Christ himself, than to have faithful Christians "giving up" just because a pastor left. **Remember, the church is called to be faithful to our Lord, NOT TO ANY PASTOR!** We pastors are only here to be messengers. Remember, St. Stephen's will be here long after any one pastor serves you.

THIRD, as I said in my sermon on August 7th – don't be afraid to TELL ONE ANOTHER what you see as possible needs and options for your future mission (I called it "yelling" to each other in the sermon; you don't have to "yell," but please communicate!). ***One of the most important realities during an interim is for CONSTANT COMMUNICATION between the Search Committee and the faithful of the congregation.*** The only way any crisis (losing a pastor is a crisis) – whether a personal problem or congregational issue – **is avoided is through sharing your hopes, needs and concerns.** When there is a LULL in this communication, there will be potential problems for your future mission and ministry.

FINALLY, DON'T LOSE THE WONDERFUL FOCUS AND COMMITMENT of love and deep concern that you have for each other and have already shown me and Susan. This is one of the treasures of St. Stephen's – you care and you are deeply concerned about your church, your personal lives, and ANYONE who needs support and care. There is no greater focus for a congregation during its search for a new pastor (or any other time). ***Every pastor whom you will consider will first and foremost be "assessing the love & care quotient of your congregation."*** If he/she feels you are a "cold, distant, and uncaring" flock, that pastor will immediately look elsewhere for a Call.

Be assured, you remain in my prayers daily, not only during this time that we are together, but long after we will part regular company. I hope you will keep Susan and me in your prayers as well.

PASTOR PETER

THE PASTORAL CARE TEAM is excited to welcome Pr. Peter as our current leader. He is just great; take a few moments to meet him if you haven't. The team will remain up and running along side Pr. Peter. That means we will continue with prayer, hospital visits and home visits; with people ready to help with a meal or occasional transportation to church or the doctor. Feel free to contact Pr. Peter directly, or if you prefer, you may still contact Wendy Staup at 419-474-3086 / wjstaup@aol.com. St. Stephen is well known for our loving and supportive relationships. Let's keep on loving as Jesus did and does.

GATHERING SPACE

DUE TO PASTOR PETER'S four week session (*more information at right*) on grief, there will be no formal Gathering Space until October 9TH. Please try to attend some or all of Pastor Peter's sessions. GRIEF IS SOMETHING WE CAN ALL RELATE TO.

We meet in the large classroom off the fellowship hall at 9:45AM.

See you!

Rod Hochstetler Adult Education Ministry

KidZone Hour Children, nursery age thru 6th grade, may drop in any time between 9:45 and 10:45 to "hang out" with other St. Stephen children, while their parents are in the adult Gathering Space. They will enjoy snacks, craft activities, games and fellowship.

Come to the nursery room to find out where the activities will be taking place. Parents or older siblings are requested to come to the activity area at 10:45 to pick up the children. Parents may send along any snacks or craft activities for use during this time. Children may also bring special toys with them. Thank you.

Sunday Lessons

Kids, Join us for a new year of Sunday Lessons. We'll meet following the Children's Sermon at the 11:00 service. There will be a fun lesson and snack. Invite your friends to join you for a year of exciting fun!

- 9/11/11 Joseph Helps His Family Genesis 45:1-15; 50:15-21
- 9/18/11 The Vineyard Workers Matthew 20:1-16
- 9/25/11 The Chief Priests Matthew 21:23-32

MEN OF FAITH

All men are invited to *join us for coffee, study, & discussion @ 6:30AM @ Nautica Coffee the 2nd & 4th Thursday mornings each month. We'll meet September 8 & 22.*

A SEPTEMBER SUNDAY MORNING SUPPORT EXPERIENCE

at St. Stephen's Lutheran Church

beginning

SUNDAY, SEPTEMBER 11, 2011

[the Anniversary of 9/11]

9/11; 9/18/ 9/25 and 10/2

from 9:45AM – 10:45AM

IN THE FELLOWSHIP HALL

led by Pastor Peter Martyn

WEEK # 1- Sunday, September 11

Introductory Thoughts and Ten Reasons for being here!

WEEK # 2 – Sunday, September 18

COPING with LOSS

and its many variations;

“What to Say ... What NOT to say”

WEEK # 3 – Sunday, September 25

LOST TRADITIONS & RITUALS: SAYING “GOOD BYE” RESPECTFULLY

WEEK #4 – Sunday, October 2

The GOOD that comes from LOSSES

Tell your friends in the area to come and join us at St. Stephen's!!



ST. STEPHEN'S FIRST

COMMUNITY HEALTH FAIR

SEPTEMBER 10 ~ 10AM—3PM

We, are hosting a Health and Community Awareness Fair for the public Saturday, SEPTEMBER 10, 2011, from **10AM to 3PM** As we commemorate the 10TH anniversary of the bombing of the World Trade Center, this is a fitting event to make our community aware of the public entities (including police and firemen) available to help in an emergency; and also offer the public the opportunity to identify any health issues they may have. Flu shots will be offered by a local pharmacy.

- ⇒ The Red Cross will provide resources so we can help each other through such emergencies as winter storms and tornados, as well as information on babysitting classes, etc.
- ⇒ The American Heart Association and American Cancer Society will be represented (we're working on having a dermatologist on site for skin cancer screenings).
- ⇒ Representatives of the Police, Fire Department, and Humane Society will be there.
- ⇒ You'll find information on mental health and addiction, information on inexpensive health care.
- ⇒ We hope to have HUGS the Hippo on hand, and a Fire Truck.

ADDITIONAL OPPORTUNITIES

WE NEED PEOPLE WILLING TO SERVE AS HOSTS/HOSTESSES TO WELCOME THOSE COMING INTO THE BUILDING.

COVENANT OF RENEWAL

REMEMBERING WHAT IT MEANS TO CALL OURSELVES MEMBERS OF ST. STEPHEN LUTHERAN CHURCH



This is the time of year that we once again take the opportunity to reflect upon what it means for us to be members of Christ's church. We will do this on September 11th, 18th and 25th during our Sunday morning worship services. **COVENANT OF RENEWAL** letters and forms were mailed out in late August. Bring or mail yours in or pick one up from an usher when you attend on Sunday morning. Prayerfully consider your promise to God and the work of His kingdom.

FALL CLASSES BEGIN
POTLUCK LUNCH—SEPTEMBER 11
 following the 11:00 service
FUN—FOOD—FELLOWSHIP
FROZEN TREATS (including Gluten Free & Low Fat/Low Sugar) – & – **ENTERTAINMENT**

SUNDAY, SEPTEMBER 11 WE WILL HAVE OUR FIRST FALL CLASSES.

- **ADULTS** will meet at **9:45AM** with Pastor Peter for a 4 week series on Support Experience.
- **PRE-SCHOOL** thru **4TH GRADE** will attend **SUNDAY LESSONS** following the **CHILDREN'S SERMON** at the **11:00 SERVICE**. This year we will have **PRE-SCHOOL & KINDERGARTEN, 1ST & 2ND, and 3RD & 4TH. We'll have LOTS of FUN!!**

ADDITIONAL OPPORTUNITIES

- Wendy Staup will once again lead the **5TH & 6TH GRADERS**. Stay tuned for more information.
- **CATECHISM** students and their parents will meet with Pastor Glen Stadler in October. (see below)
- **High School** students will also begin to meet in October. Watch for more information.

Connect with old friends and meet new ones.
 Bring a friend with you and enjoy the fun together.

CONFIRMATION IS COMING WITH PASTOR STADLER

Meeting with Parents and Students

Sunday, October 23RD between services – 9:45AM

Pastor Glen Stadler, our next Interim Pastor at St. Stephen, is planning to meet with the parents and students of confirmation age on Sunday, October 23RD at 9:45AM. He will use this time to determine the status of instruction for those students in the catechism program ... and also suggest a curriculum which may be used for student instruction. Moreover, this orientation will offer parents and students an opportunity to determine the best time for students to meet with Pastor Stadler.

AGAIN, PLEASE SAVE SUNDAY, OCTOBER 23RD TO MEET WITH PASTOR STADLER BETWEEN SERVICES!

J OY CLUB
 SEPTEMBER JOY CLUB 'ENCORE' PICNIC

Kay Bork is inviting us to her home, 2428 Gibley Park Rd, in the St. James Sub-Division for an 'ENCORE' picnic at **12:30 on Tuesday, September 26th**. She will provide sandwiches and beverages, and we will each bring a dish to pass.

If you would like to car pool from church, be there by **NOON**. Please sign up on the bulletin board if you would like to attend and what dish you plan to bring. Designate whether you will car pool or drive yourself.

**W
O
M
E
N**

Coffee, Cookies & Conversation

will meet

MONDAY, OCTOBER 10TH — 7:00-9:00PM
 at the PEARSON HOUSE

Any thoughts or new ideas for our quarterly gathering will be welcomed. I am looking forward to October's beauty as we get together for fellowship. *Patti Pearson*

REFRESHMENTS WILL BE PROVIDED.

JOIN US FOR FRIENDSHIP AND DEVOTIONAL TIME

THE SOCIAL CONCERNS COMMITTEE

Anyone interested in this committee may attend our meetings. *Questions: see Kathy Aldrich*
 Watch the Beacon & bulletin board for opportunities to give & help in our community.

Lutheran World Relief (LWR) is asking for donations to assist those suffering from drought in East Africa. People, young and old, are traveling to refugee camps that are not equipped to hold the amount of people that need help. LWR is asking for donations to send immediate aid to those suffering. They will donate food rations, shelter and other needed services. Find out how to donate quickly and easily by going online and visiting at <http://lwr.org/site/c.dmJXKiOYJgl6G/b.6319057/k.C1B0/Donate.htm>. Please keep the people of East Africa in your prayers.

Kathy Aldrich - Social Concerns Liaison

VOLUNTEERS NEEDED: Anyone interested in providing MEALS for—or TRANSPORTING — members of our congregation on request, please sign up on the bulletin board.

KROGER COMMUNITY REWARDS St. Stephen received \$233.15 for the last quarter in funds from the Kroger Community Rewards reimbursement as setup by various congregational members! We encourage all members to sign up and designate St. Stephen as the recipient of rewards points of their Kroger card.

Reimbursement funds will be applied to the Future Needs Fund.

If you would like additional information on how to sign up, please contact Kathy Aldrich or Marilyn Scuralli

FEED LUCAS COUNTY CHILDREN

Several people have asked me recently about a program called Feed Lucas County Children. 21% of children in Lucas County live with families that have incomes below the poverty level. These children often qualify for the free and reduced hot lunch program during the school year, but the fact remains that when summer vacation begins the lunch program ends and children go hungry. Feed Lucas County Children offers approximately 70 sites that qualifying families may send their children for a nutritious meal and special activities. The programs usually run from June through early August. FLCC offers opportunities to donate monetarily and to volunteer at sites throughout the county at churches, community centers, and park shelter houses. To find out more information about this charity please go to feedlucaschildren.org.

**LSS Food Pantry
September**

BAKED BEANS, DRIED BEANS, RICE

Donations may be placed in the white shopping cart located in the narthex.
 How many times can we fill it in September?

HELPFUL HINTS

- You may bring items other than current month listing
- LSS stores food by basic food groups
- Families encouraged to pick food items from each group
- Normal family size packages are best
- Special dietary food items also needed (ie: diabetic, vegan)
- Place items in "Shopping Cart"

July NOISY OFFERING \$108.50

UT CAMPUS MINISTRIES

August NOISY OFFERING \$142.70

donation to ST. PAUL'S COMMUNITY CENTER

Next Noisy Offering:

September 4

donation to LWR

(SEE ARTICLE ABOVE_

OPERATION CHRISTMAS CHILD

is in full gear again! Have you seen the ads in the paper already? Today I found t-shirts for 5/\$10 at Michaels. I'm going to check them out. Someone else had socks for \$1.00 a pair. So when you are shopping, keep your eyes open for those great bargains. In the meantime, let me answer some recent questions about OCC. Let me say thank you to the person who donated a whole box of knitted gloves (*and a hat and a scarf*) to the rummage sale. I took that box (*giving the church a donation*) and made fleece ear warmers to go with the gloves. Now, does OCC know to deliver those items to a cold country? Yes, they do. That is one reason they open and inspect the boxes....first to be sure there is nothing in the box that will not go through the customs inspection and then to be sure it goes to the right climate. Most of the pictures you see for OCC tend to show dry desert type of settings but they do go to places like Siberia where it is cold. Must I enclose a check if I fill a shoe box? No, that is a suggestion to help with shipping costs but it's not a rule. However, now OCC is strongly suggesting that you donate online at www.samaritanspurse.org. If you are interested, they will give you a bar code to put on your box and you can follow it's journey and find out where it goes!! How neat is that? Can I buy things that are not on the suggested list? It is best not to buy anything not on the list. Remember, these boxes go all over the world and they all go through inspection and customs. So things like liquids will be removed from the boxes at the collection sites as will anything deemed else unacceptable.

I hope you will all take some time to purchase items for shoe boxes and/or to help pack shoe boxes for the children of the world. We are so blessed to live in this country. Please remember the children.

Betty Lock

The hazy, lazy days of summer turned into the hazy & hot but busy days of summer for most of us. Sometimes when we are busy, it is difficult to find those quiet moments to be alone with God. Yet those busy times are exactly when we need those quiet times. I hope that this summer you have all found time to be with God of the still, small voice.

In September, we have previously asked the members of St. Stephen to pray for each other. To facilitate that idea, we will have a box with slips of paper and on each slip will be the name of a member or attender of St. Stephen. We ask that as you enter the sanctuary for worship, that you take a slip of paper out of the box, go to your seat and pray for that person. If you know the person you

are praying for, you will be able to pray more specifically. If you do not know that person, you can still pray and ask for God's blessings on that person. This is done quietly before worship begins. However, if you find yourself entering the sanctuary late, you may still take a slip of paper and pray for that person during the prayers of the church. **There is no greater gift that we can give each other than our prayers.**

At home, during your quiet time, you may want to pray for that person again. Also, we ask that you pray for our children as they return to school and for the teachers, administrators and bus drivers.

LET'S PRAY!

"I need that place in my life from which I can quietly listen to God and grow in spirit. The great times of growth in my life usually come during those quiet times when I center on God and find direction in life." The Word in Season, July 6, 2011

If you are concerned about praying for someone else, the following is a prayer from the Lutheran Book of Prayer which you could use.

"Dear God, help _____ to live in the joy of his/her freedom. Prepare _____ to meet every new day with joy. Prepare _____ to accept new tasks with joy. Prepare _____ to live in the midst of this world with joy and confidence. Thank you, God our Father, for the joy and peace that revive _____ and restore _____ to life. In Jesus name, Amen."

During this time, we ask everyone to enter the sanctuary quietly and remain in quiet prayer and contemplation.

Please let us all take a slip of paper and join in praying for each other.

HEALING PRAYERS

are offered following each service in the prayer chapel.

Look for a PRAYER ASSISTANT,

Nancy Pfau, Rod Hochstetler, Lin McKelvey or Betty Lock,

to join you there.

+ Christian Symbols +

ROBE



A robe, specifically one that's new and white, symbolizes the righteousness we receive through Jesus' death and resurrection. Isaiah 61:10 speaks of "the garments of salvation" and "the robe of righteousness." In Revelation 6:11, faithful martyrs each received a white robe. People who are being baptized or confirmed often wear white robes as a sign of purity

BIBLE QUIZ

At the outset of his reign as Israel's third king, Solomon saw the Lord in a dream. God invited Solomon to request anything he wanted. What did Solomon ask for?

- A. The ability to discern between good & evil
- B. Long life
- C. Riches
- D. Conquest over his enemies

Answer: Page 10

BULLETIN BOARD

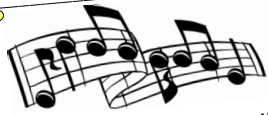
SAFS

ST. STEPHEN BOOK CLUB
THE BOOK CLUB MEETS the third Thursday of each month at 7:00PM to discuss a different agreed upon book at the Ziegler's, 7930 Anvil Court. Call Kathy Ziegler, 419-882-0340, for more info or directions.

We will meet again **THURSDAY, SEPTEMBER 15TH**. We are reading **"MILES TO GO"** by Richard Paul Evans.

Unemployment Resource Center at St. Stephen open every Tuesday 10AM - 12NOON
 Anyone who is in need of help with a resume and learning a good aggressive networking system, can get help at the Resource Center.
 Center is run by Dick Lock, Roger Ritzert, and Chuck Camarote.

Recycle: Pull tabs from drinks and soups to benefit Ronald McDonald House.
 Put in an envelope on the bulletin board.



MUSICAL NOTES

MUSICIAN TRAINING SESSIONS

Scott Ballard will set up some training sessions for anyone interested in participating with the musical ensemble (*musicians and singers*) during the 11:00 Sunday Worship services. Interested individuals should contact Scott directly and he will find a time best for all.
 419-475-8435 sballard@bex.net

Starting in October we will begin rehearsing **CHRISTMAS MUSIC**. All interested individuals should see Scott Ballard



SEE THE BULLETIN BOARD for more information & opportunities.

CORNER A BIG THANK YOU

THANK YOU

...goes out to Herb Hoehing, Richard Cutler, Nick Scuralli, the Ziegler's, Greg Stilwell, and anyone else you has been contributing to the maintenance of our fine building.

... to the members of the congregation that were able to contribute to the Sylvania Area Family Services collection of hygiene and cleaning products. We were able to send over approximately 20 grocery bags of useful items to support our local families. Our donations are greatly appreciated by SAFS and the families and individuals they serve. A special thank you to social concerns committee member, **Larry Golba**, for the delivery of these items. Thank you again to everyone for your continued support of the projects of your social concerns committee. If you are interested in taking part in this committee please consider attending the next meeting in September to become familiar with the work we do. Look for more information about this meeting in the near future *Kathy Aldrich*

... those who helped with VBS in June; Patti Pearson was a teacher/helper, Pat Hoehing and Cathy Gustafson helped in the kitchen and Libby Boldt shopped for food and served it.

... to everyone who helped with the July fireworks party on our lawn.

THANK YOU

CORNER



You Can Make A Difference

If you'd like to contribute regularly to this congregation, you can do it the easy way—through a free electronic funds transfer program, **Simply Giving***. Offered by Thrivent Financial for Lutherans, Simply Giving helps you and St. Stephen. For you, the service is convenient and ongoing--no more forgotten checkbooks or giving envelopes. For St. Stephen, Simply Giving provides a steady, more predictable revenue stream.

I am your contact for this program and am available to answer your questions. Please see me for an application to join,
Sally Goetz, Simply Giving Coordinator

GENERAL FUND: Monthly Operating Expenses.

BUILDING FUND: designating offerings for future " Building Growth"

FUTURES NEEDS FUND: designate offerings for future needs of the church, ie: Tables, Chairs, etc.

NOTE: DESIGNATE FUND DONATING TO ON THE OUTSIDE OF YOUR ENVELOPE & IN THE MEMO AREA OF CHECK.

Changes to

ADDRESS, PHONE, EMAIL

As always, PLEASE REMEMBER to call or send in your changes to the office, so we may keep our records up to date, UPDATE THE CONTACT TEAM MEMBER and get in touch with you when necessary.

N

OTE:

WHEN YOU PLAN TO USE THE BUILDING, please contact the office, so that your event may be logged on the church calendar.

SPACE IS APPROVED

BASED ON WHAT IS ON THE SECRETARY'S CALENDAR. If we don't know that you wanted to use it, the space you use may have been promised to someone else. Also, when someone checks the calendar for availability, they will assume the building is available because there is nothing listed during the time they want it.

Also, please note:

IT IS YOUR RESPONSIBILITY TO

SET UP AND CLEAN UP

WHEN USING THE BUILDING.

Thank you for your cooperation!

NOTE: If you requested e-mail for the Information Chain, it comes from "mail@notify.onecallnow.com" Please add it to your contacts (address book), so you may receive important information & prayer requests.

Pr. Jim & Karen Wicker have moved.

Their new address is:

4778 Meadow Rue
Toledo, OH 43614

Phone: 419-944-2777

OCTOBER 16: SYLVANIA FALL FESTIVAL: No pumpkins this year, but we'll have a booth & need outgoing people to help present/introduce St. Stephen to the community in a different setting.

LIVING NATIVITY: This is where we will need the most help! We need people to design and build a manger, some who can make costumes for Mary, Joseph, shepherds, Wise men and angels, and also we need some sheep and a donkey. Any donation of building materials and fabric are greatly appreciated!

See Beth Thomsen Sally Goetz , Anne Cox

"WE WALK BECAUSE WE CAN" is the motto for this year's walk, Sunday, **OCTOBER 2 @ 12 NOON.**

Flower Hospital will host the 8TH **Walk to Defeat ALS**, known as Lou Gehrig's disease. Join "**Paul's Crew**" and other families as they walk the 2 mile paved paths on the historic Flower Hospital Campus in Sylvania.

CLOWNS, FACE PAINTING, and FUN ACTIVITIES precede the event.

A Choice Auction will follow in the Barn offering wonderful goods and services

Information on team formation and the event: Ruth Moeller 419 885 2673 or www.alsohio.org

2011 Council Members

Marilyn Scuralli—President;
John Lock—Vice President;
Nick Liaros—Secretary

2011 Council Ministry Liaisons

Christian Education	Rod Hochstetler
Evangelism	Beth Thomsen
Finance	Nick Liaros
Prayer	Rod Hochstetler
Property	Tom Schmidt
Social Outreach	Kathy Aldrich
Staff Support	Marilyn Scuralli
Stewardship	Marilyn Scuralli
	Richard Cutler
Technology	John Lock
Worship & Music	John Lock
Youth/Family Ministry	Richard Cutler

Note: Carol Taylor remains Treasurer of St. Stephen but no longer a member of council.

LITTLE MIRACLES

MORNING AND AFTER SCHOOL CARE PROGRAM IS SET OPEN AUGUST 29

- ◇ MORNING HOURS: 7:00-9:00.
- ◇ AFTERNOON HOURS: 3:00-6:30.
- ◇ Currently there are six children enrolled, with more applications being accepted.

The Montessori concept of education allows the children to work and learn according to the development of each individual child. Both morning and afternoon sessions include some physical activities and several work stations that will allow the children to explore and be spontaneous. The afternoon session includes a snack as well as homework help.

If you have any questions about the program please contact Patrice Victor at 419-882-2638 or vicpl1@aol.com.



Learn more about Thrivent Financial for Lutherans at www.thrivent.com.



CELEBRATING 100 YEARS
1911-2011

Save the Date

Lutheran Social Services of Northwestern OHIO
CENTENNIAL CELEBRATION
with

CAPITAL UNIVERSITY CHAPEL CHOIR
Holy Rosary Cathedral
OCTOBER 30, 3 PM

“HOSPICE 101 – THE TRUTHS AND MISCONCEPTIONS ABOUT HOSPICE” presented by Erie West Hospice. An attorney will also be available to answer questions on elderly legal issues. Please join us for this FREE evening seminar at Lutheran Village at Wolf Creek Retirement community on Thursday, Sept. 22, at 6:30 p.m. LVWC is located at 2001 Perrysburg-Holland Road, Holland. For more information, please call 419-861-5619.

NEWSLETTER INFORMATION

NEWSLETTER DEADLINE:

the 2nd Tuesday of each month

OCTOBER 2011 ITEMS

should be in the church office by

September 13, 2011

YOU MAY ALSO E-MAIL THEM TO: sslcsecretary@bex.net.

ENRICH YOUR LIFE BY HELPING OTHERS

If you're one of the 76 million baby boomers approaching retirement, you're probably in better health and are far more active than retirees of the past. If you're one of them, consider contributing your time, energy and expertise to one of the many volunteer organizations in your community.

Thrivent Financial for Lutherans offers a wide range of volunteer opportunities through its chapter programs. These opportunities give Thrivent Financial members and other Lutherans the chance to join together to meet individual and community needs.

So, next time you're thinking about retirement, think about your strengths, passions and special gifts. Then think about how rewarding it would be to share them. For instance, if you like building things or helping others, you might want to participate in a Thrivent Builds with Habitat for Humanity project.

For more information about Thrivent Financial volunteer opportunities, contact Ron Ashley, FIC, Financial Consultant, at 419-874-4378 or e-mail ronald.ashley@thrivent.com today.

ANSWERS

BIBLE QUIZ:

A (See 1 Kings 3:4-14.)

SEPTEMBER Volunteers

Counter for September: Ken Marvin

September 4	September 11	September 18	September 25
<p>Council Person 8:30 Rod Hochstetler 11:00 Beth Thomsen</p> <p>Lay Assistants 8:30 Dan Gustafson 11:00 Bob Rieck</p> <p>Acolyte 8:30 volunteer</p> <p>11:00 Sydney Seretsky</p> <p>Altar Preparation 8:30 Cathy Gustafson 11:00 J. Liaros / R. Liaros</p> <p>Greeters 8:30 W&D Staup 11:00 P&R Cutler</p> <p>Ushers 8:30 W&D Staup 11:00 S&J Kahl</p>	<p>Council Person 8:30 Rod Hochstetler 11:00 Nick Liaros</p> <p>Lay Assistants 8:30 Anne Cox 11:00 Marilyn Scuralli</p> <p>Acolyte 8:30 volunteer</p> <p>11:00 Anthony Russell</p> <p>Altar Preparation 8:30 Pat Hoehing 11:00 Tricia Kunkel</p> <p>Greeters 8:30 P&H Hoehing 11:00 M&C Williams</p> <p>Ushers 8:30 P&H Hoehing 11:00 T&J Kunkel</p>	<p>Council Person 8:30 John Lock 11:00 Richard Cutler</p> <p>Lay Assistants 8:30 Sally Goetz 11:00 Dick Lock</p> <p>Acolyte 8:30 volunteer</p> <p>11:00 Gabi Ide</p> <p>Altar Preparation 8:30 P&R Pearson 11:00 Kathy Ziegler</p> <p>Greeters 8:30 P&R Pearson 11:00 L&L Golba</p> <p>Ushers 8:30 P&R Pearson 11:00 K&L Tefft</p>	<p>Council Person 8:30 Tom Schmidt 11:00 Kathy Aldrich</p> <p>Lay Assistants 8:30 Rod Hochstetler 11:00 Dave Haddix</p> <p>Acolyte 8:30 volunteer</p> <p>11:00 Austin Mercer</p> <p>Altar Preparation 8:30 Linda McDonough 11:00 Barb Davis</p> <p>Greeters 8:30 C&D Gustafson 11:00 J. Cunningham / J. Haddox</p> <p>Ushers 8:30 C&D Gustafson 11:00 N&B Rieck</p>

2011 VOLUNTEER SIGN UP is posted on the bulletin board.

Check your calendar and then SIGN UP ON THE BULLETIN BOARD for the TIMES BEST FOR YOU to ASSIST in the various areas of our services. You may also call Cathy Gustafson to volunteer for LAY ASSISTANT, ACOLYTE, GREETERS & USHERS

Any slots not filled in will be assigned, as in the past.

REMINDER:

IF YOU ARE UNABLE TO SERVE on your day, it is your responsibility to get a replacement and call the church office with the updated information

SEPTEMBER Celebrations

Altar Flowers

9/4 Celebrating the 34th Wedding Anniversary of *Patti & Rodney Pearson*

9/11 Celebrating the 28th Wedding Anniversary of *Carol & Keith Taylor*

9/4 Celebrating the 68th Wedding Anniversary of *Cathy & John Hopkins*

2011 DATES AVAILABLE FOR MEMORIALS, REMEMBRANCES, CELEBRATIONS

Anniversaries

- 9/1 Tracy & Ed LaBo
- 9/2 Patti & Rodney Pearson
- 9/5 Cathy & John Hopkins
- 9/6 Kathie & Lynn Tefft
- 9/9 Carol & Keith Taylor
- 9/14 Kay & Jim Bork; Christy & Greg Stilwell II
- 9/17 Carrie & Brad Alexander
- 9/22 Sue & Joe Kahl
- 9/27 Kathy & Steve Ziegler

Baptismal Birthdays

- 9/1 Betty Krahn; Marty McKelvey
- 9/6 Sara Kosik
- 9/11 Mike Davis; Ed LaBo
- 9/12 Caleb Abbey
- 9/13 Kathy Troxel
- 9/14 Reed LaBo
- 9/15 Harold Clark
- 9/17 Marilyn Scuralli
- 9/19 Shannon Miles
- 9/21 Kyle Victor; Sam Victor
- 9/21 Jacob Pratt
- 9/28 Joan Haddox
- 9/29 Caroline Ide

Birthdays

- 9/2 Darrell Staup
- 9/6 Mike Davis
- 9/8 Alysa Liaros
- 9/9 Charlotte Ide
- 9/10 Keith Taylor
- 9/12 Clara Aldrich, Haden Aldrich
- 9/13 Chuck Williams
- 9/14 Lisa Hopkins; Jeff Markin
- 9/15 Kaitlin Abbey
- 9/16 Hayden Haddox
- 9/19 Diane Ducat
- 9/20 Bryan Heidtman; Charlie Wechsel
- 9/22 Aaron Ziegler
- 9/24 Adam Scuralli
- 9/25 Daniel Hall; Ruth Moeller
- 9/29 Caroline Ide
- 9/30 Brian Barger

Almighty God, you blessed us with this life. Give us gracious love, clam strength, and patient wisdom that we may grow in all that is just ad true and good, following the example of Jesus Christ, our Savior. Amen

Worship pg 82; adapted

If your special date has been missed or is incorrect, call the church office with up-to-date information.

